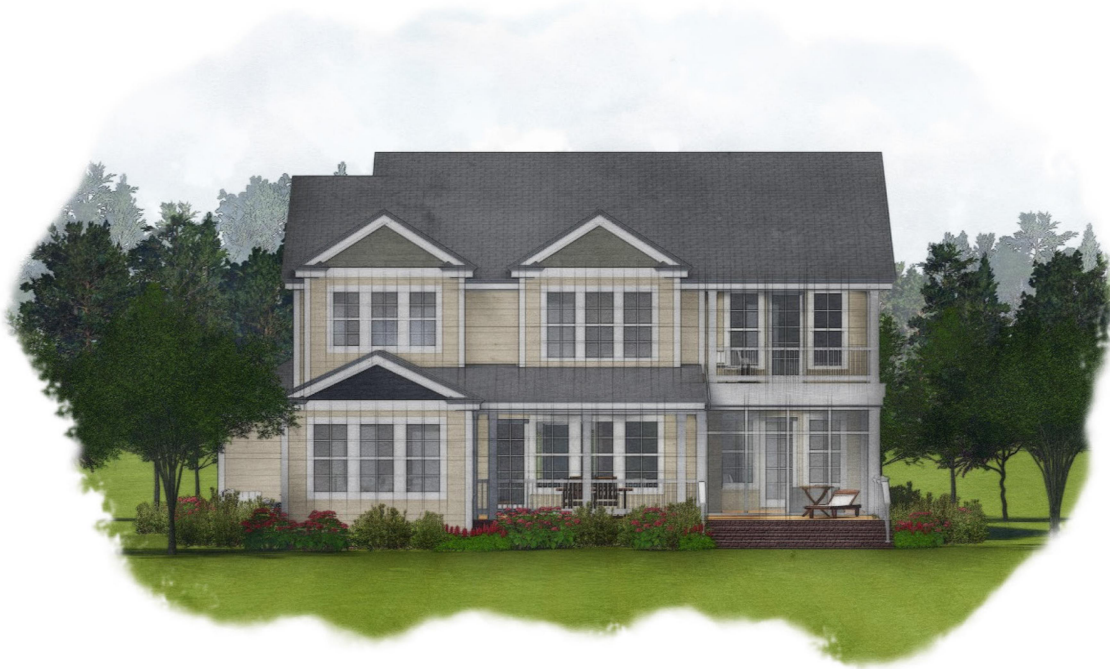




Front Elevation



Rear Elevation



Floor plans and models are architect's conception and are not intended to show specific detailing. Because we are always improving our homes, we reserve the right to substitute all materials, appliances, and fixtures with like kind and quality and to change features, options, and architectural details prior to purchase without notice. Some models may be reversed from floor plan. Furnishings and appliances shown are to aid you in visualizing floor plans and are not included in the sales price. Windows, ceilings, and front porches may differ by model. Prices subject to change without notice.

Heron I - Elevations  
Burwell's Bluff

May 28, 2019

Architect's rendering - subject to change





Side Elevation



Side Elevation



Floor plans and models are architect's conception and are not intended to show specific detailing. Because we are always improving our homes, we reserve the right to substitute all materials, appliances, and fixtures with like kind and quality and to change features, options, and architectural details prior to purchase without notice. Some models may be reversed from floor plan. Furnishings and appliances shown are to aid you in visualizing floor plans and are not included in the sales price. Windows, ceilings, and front porches may differ by model. Prices subject to change without notice.

## Heron I - Elevations Burwell's Bluff

May 28, 2019

Architect's rendering - subject to change

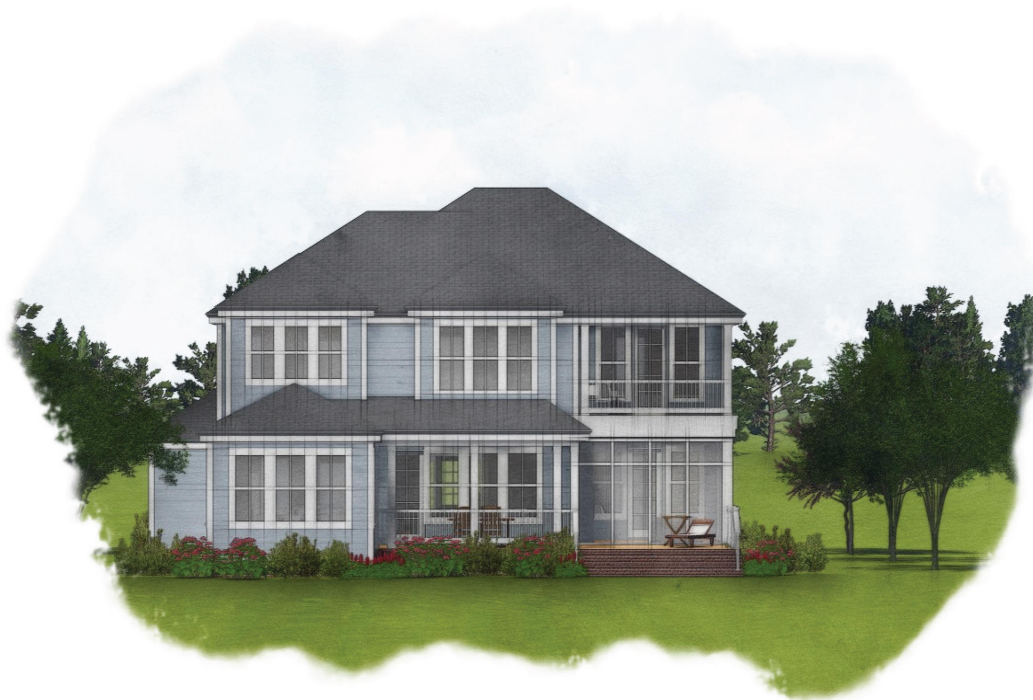


ARCHITECTURE | INTERIORS | PLANNING





Front Elevation



Rear Elevation



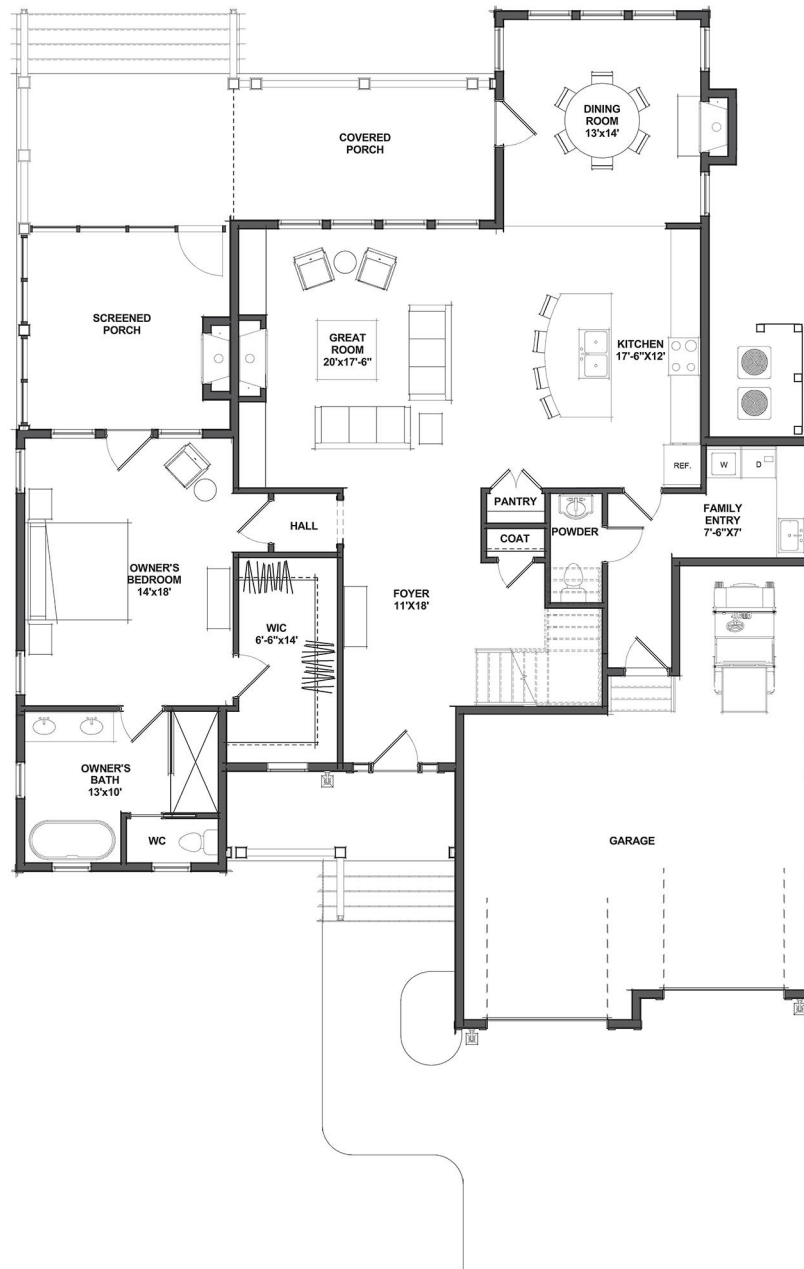
Floor plans and models are architect's conception and are not intended to show specific detailing. Because we are always improving our homes, we reserve the right to substitute all materials, appliances, and fixtures with like kind and quality and to change features, options, and architectural details prior to purchase without notice. Some models may be reversed from floor plan. Furnishings and appliances shown are to aid you in visualizing floor plans and are not included in the sales price. Windows, ceilings, and front porches may differ by model. Prices subject to change without notice.

Heron II - Elevations  
Burwell's Bluff

May 28, 2019

Architect's rendering - subject to change





#### Area

First Floor	1,703 SF
Second Floor	1,234 SF
Finished Area	2,937 SF

Covered Porches	542 SF
Garage	583 SF



Floor plans and models are architect's conception and are not intended to show specific detailing. Because we are always improving our homes, we reserve the right to substitute all materials, appliances, and fixtures with like kind and quality and to change features, options, and architectural details prior to purchase without notice. Some models may be reversed from floor plan. Furnishings and appliances shown are to aid you in visualizing floor plans and are not included in the sales price. Windows, ceilings, and front porches may differ by model. Prices subject to change without notice.

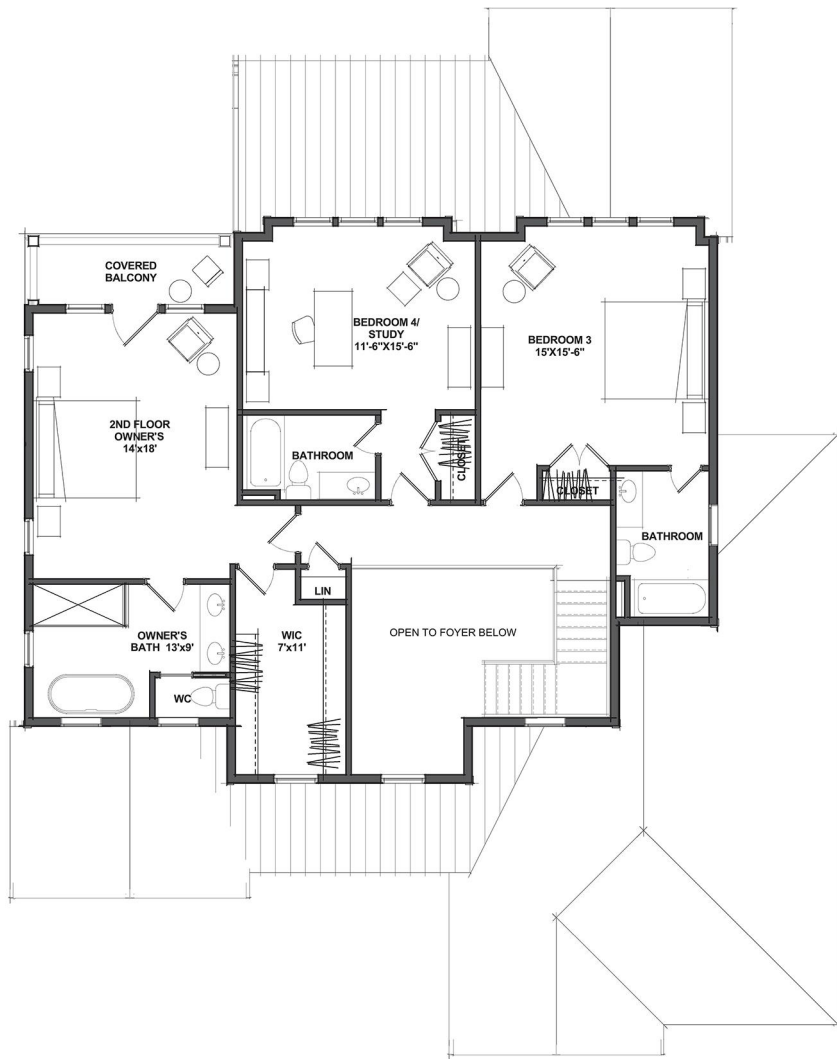
**Heron I - First Floor**  
Burwell's Bluff

May 28, 2019

Architect's rendering - subject to change







#### Area

First Floor	1,703 SF
Second Floor	1,234 SF
Finished Area	2,937 SF

Covered Porches	542 SF
Garage	583 SF



Floor plans and models are architect's conception and are not intended to show specific detailing. Because we are always improving our homes, we reserve the right to substitute all materials, appliances, and fixtures with like kind and quality and to change features, options, and architectural details prior to purchase without notice. Some models may be reversed from floor plan. Furnishings and appliances shown are to aid you in visualizing floor plans and are not included in the sales price. Windows, ceilings, and front porches may differ by model. Prices subject to change without notice.

**Heron I - Second Floor**  
Burwell's Bluff

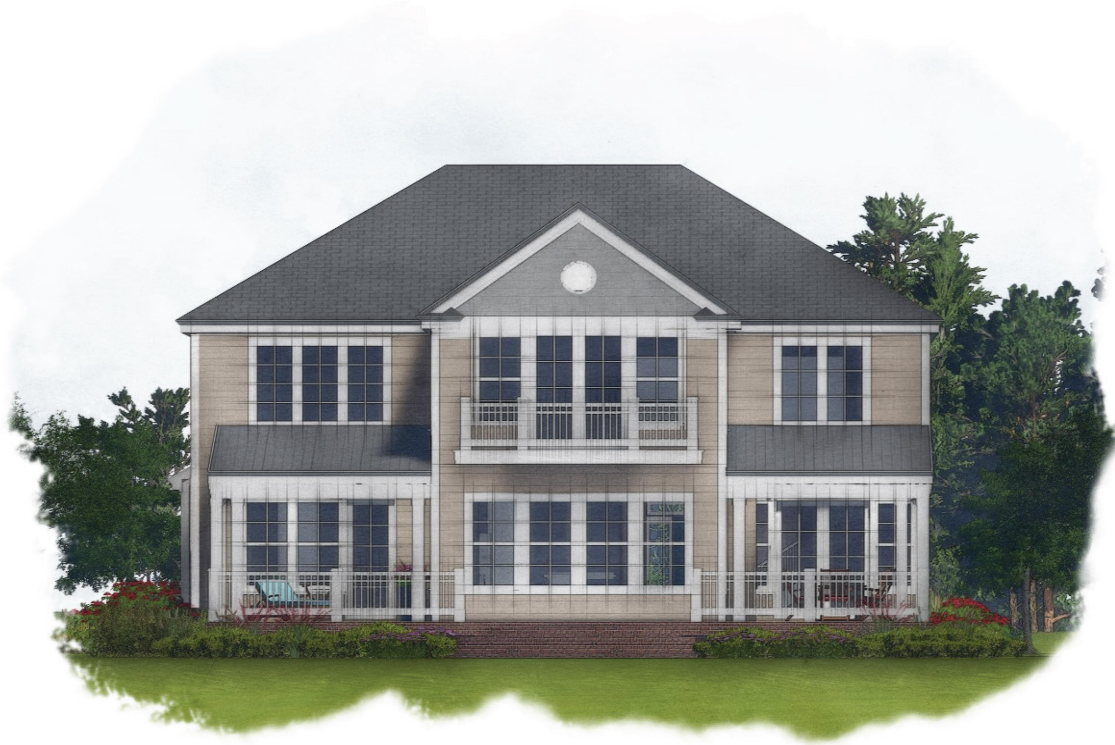
May 28, 2019

Architect's rendering - subject to change





Front Elevation



Rear Elevation



Floor plans and models are architect's conception and are not intended to show specific detailing. Because we are always improving our homes, we reserve the right to substitute all materials, appliances, and fixtures with like kind and quality and to change features, options, and architectural details prior to purchase without notice. Some models may be reversed from floor plan. Furnishings and appliances shown are to aid you in visualizing floor plans and are not included in the sales price. Windows, ceilings, and front porches may differ by model. Prices subject to change without notice.

Osprey I - Elevations  
Burwell's Bluff

May 28, 2019

Architect's rendering - subject to change



ARCHITECTURE | INTERIORS | PLANNING





Side Elevation



Side Elevation



Floor plans and models are architect's conception and are not intended to show specific detailing. Because we are always improving our homes, we reserve the right to substitute all materials, appliances, and fixtures with like kind and quality and to change features, options, and architectural details prior to purchase without notice. Some models may be reversed from floor plan. Furnishings and appliances shown are to aid you in visualizing floor plans and are not included in the sales price. Windows, ceilings, and front porches may differ by model. Prices subject to change without notice.

## Osprey I - Elevations Burwell's Bluff

May 28, 2019

Architect's rendering - subject to change



ARCHITECTURE | INTERIORS | PLANNING



Front Elevation



Rear Elevation



Floor plans and models are architect's conception and are not intended to show specific detailing. Because we are always improving our homes, we reserve the right to substitute all materials, appliances, and fixtures with like kind and quality and to change features, options, and architectural details prior to purchase without notice. Some models may be reversed from floor plan. Furnishings and appliances shown are to aid you in visualizing floor plans and are not included in the sales price. Windows, ceilings, and front porches may differ by model. Prices subject to change without notice.

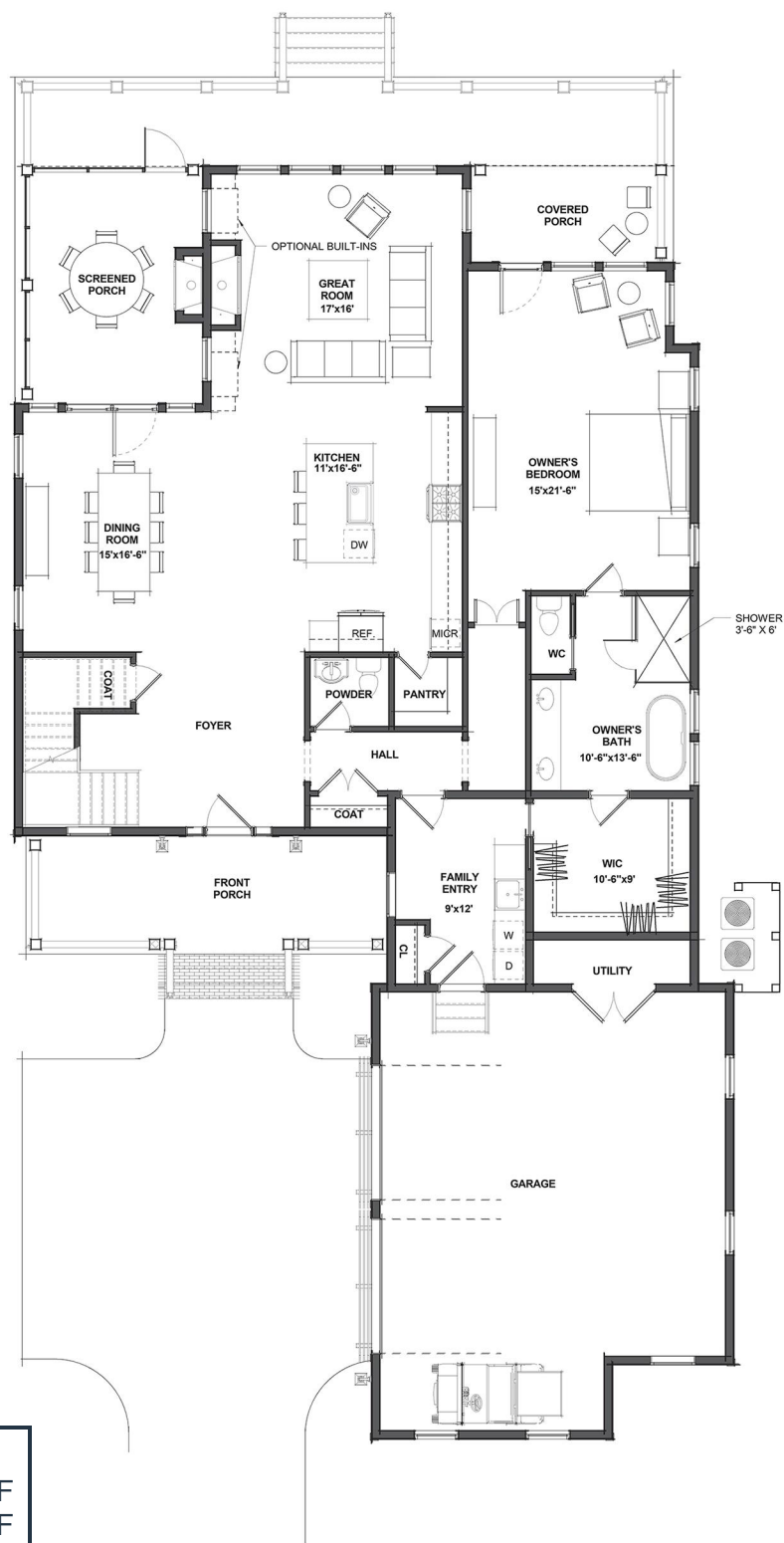
Osprey II - Elevations  
Burwell's Bluff

May 28, 2019

Architect's rendering - subject to change







#### Area

First Floor	1,909 SF
Second Floor	1,444 SF
Finished Area	3,353 SF

Covered Porches	492 SF
Garage	654 SF



Floor plans and models are architect's conception and are not intended to show specific detailing. Because we are always improving our homes, we reserve the right to substitute all materials, appliances, and fixtures with like kind and quality and to change features, options, and architectural details prior to purchase without notice. Some models may be reversed from floor plan. Furnishings and appliances shown are to aid you in visualizing floor plans and are not included in the sales price. Windows, ceilings, and front porches may differ by model. Prices subject to change without notice.

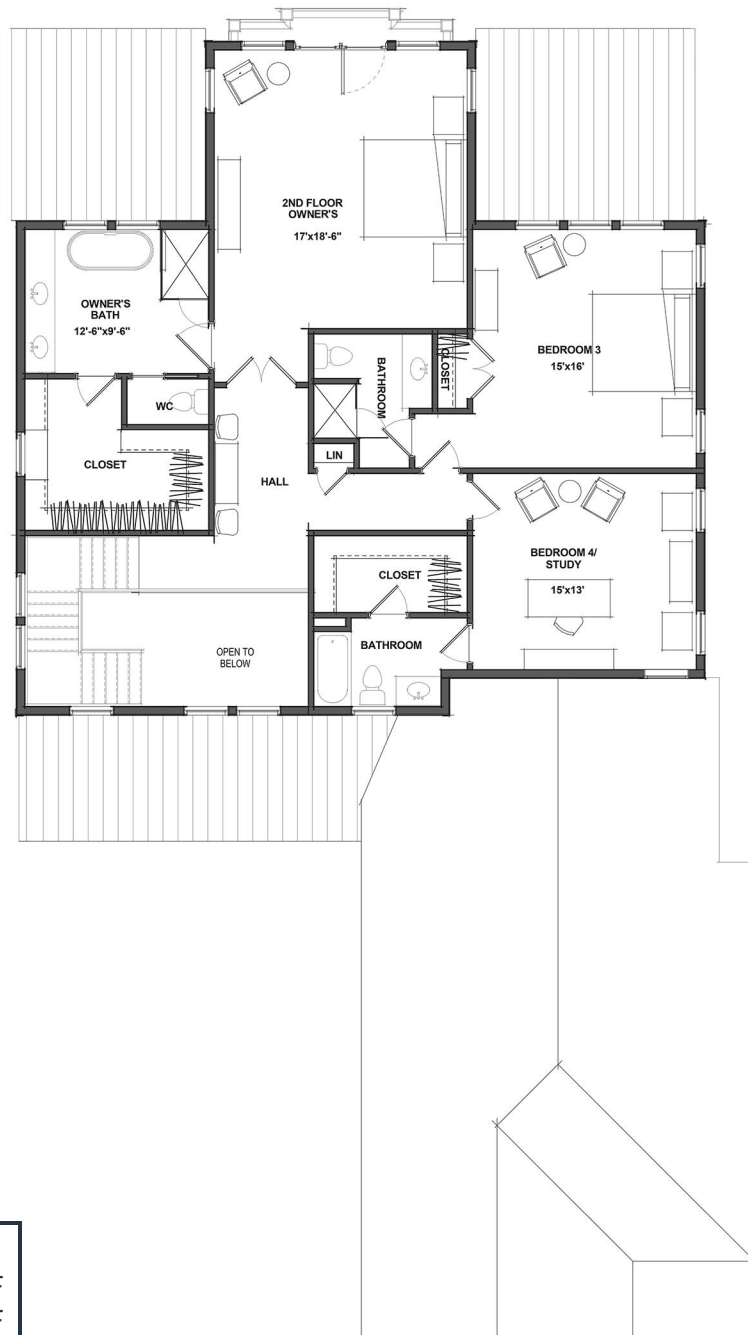
## Osprey I - First Floor

### Burwell's Bluff

May 28, 2019

Architect's rendering - subject to change





#### Area

First Floor	1,909 SF
Second Floor	1,444 SF
Finished Area	3,353 SF

Covered Porches	492 SF
Garage	654 SF



Floor plans and models are architect's conception and are not intended to show specific detailing. Because we are always improving our homes, we reserve the right to substitute all materials, appliances, and fixtures with like kind and quality and to change features, options, and architectural details prior to purchase without notice. Some models may be reversed from floor plan. Furnishings and appliances shown are to aid you in visualizing floor plans and are not included in the sales price. Windows, ceilings, and front porches may differ by model. Prices subject to change without notice.

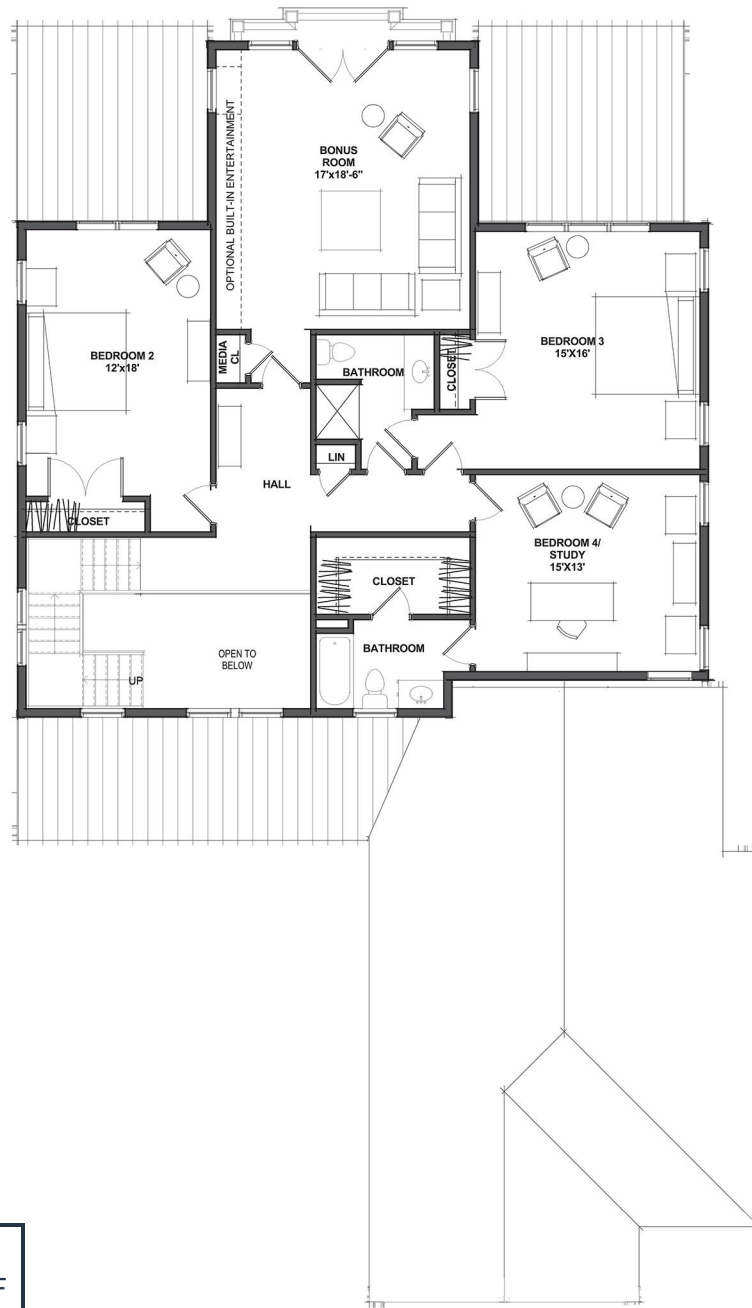
**Osprey I - Second Floor**  
Burwell's Bluff

May 28, 2019

Architect's rendering - subject to change







#### Area

First Floor	1,909 SF
Second Floor	1,444 SF
Finished Area	3,353 SF

Covered Porches	492 SF
Garage	654 SF



Floor plans and models are architect's conception and are not intended to show specific detailing. Because we are always improving our homes, we reserve the right to substitute all materials, appliances, and fixtures with like kind and quality and to change features, options, and architectural details prior to purchase without notice. Some models may be reversed from floor plan. Furnishings and appliances shown are to aid you in visualizing floor plans and are not included in the sales price. Windows, ceilings, and front porches may differ by model. Prices subject to change without notice.

## Osprey I - Second Floor Alternate Burwell's Bluff

May 28, 2019

Architect's rendering - subject to change

